

MODEL ZP5118

Operation Manual

1.Function and Feature

- (1) Step on the pedal to start the car, and release the pedal to brake.
- (2) There is a Forward/stop/Backward button on the car: push the button forward to move the vehicle forward, lay it in the middle to stop, push it backward to lead the vehicle backward. The front and rear lamps will light up correspondingly when the vehicle moves forward or backward.

2.Specification

- (1) Battery: Enclosed lead-acid battery 6V 7AH(2PCS)
- (2) User's proper age: suitable for children around 3-8years old
- (3) Loading limitation: 30kg.
- (4) Size: 110*75*78mm
- (5) Speed: 3.5--7 km/h
- (6) Power: input 110V(220V), 50HZ-60HZ, output 12V 1000MA
- (7) Duration of the battery: around one hour functioning with 8-12hours charging.

3.Cautions For Safety

- (1) It is prohibited to drive on streets, slopes or any other dangerous places.
- (2) Don't ride on sandy or lumpy surfaces.
- (3) Don't switch the Forward/Backward button during the drive. Do it only when the vehicle stops.
- (4) The vehicle is designed to load only one person. Overload is prohibited.

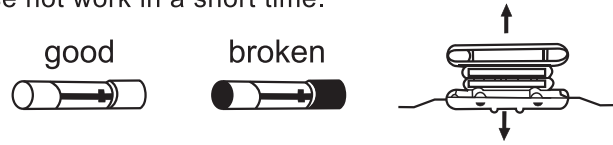
- (5) Adults should do the Battery charging, and don't let the children do it alone.
- (6) This product should be assembled or checked before using by adults. It is necessary to be supervised by adults while the child is on riding.
- (7) Don't wash the vehicle with water. Just clean it with cloth.
 - (8) Don't recharge the non-rechargeable batteries, don't mix the old and new or different types of batteries. Remove the exhausted batteries from the toy.
 - (9) The supply terminals can not to be short-circuited.

4. How to Start to Use:

- (1) Before using it for the first time, lift up the seat and connect the main wire to the battery wire (with RED to RED, BLACK to BLACK) any wrong connection may cause short circuit or other faults.
- (2) Put two NO.5 batteries into the battery-case lying beside the battery jar, the end with spring is the negative pole. Make sure to connect the two ends to the right position or it will damage the music board. Take out the battery if the vehicle is not in use for a long time
- (3) The battery charger socket is placed on the downside of the rear position lamp, the charger is laid under the seat. When the vehicle is in use, first plug in the charger then plug the charger in the power socket.
- (4) Don't charge the battery for over 15 hours each time.
- (5) Charge the battery if the vehicle runs slower.
- (6) Charge the battery fully if you will store the vehicle for a long time, then recharge it every three month so as to extend the lifetime of the battery.
- (7) It is normal that the power charger and the battery jar become warmer while the battery is on charging.

5. Fused tube

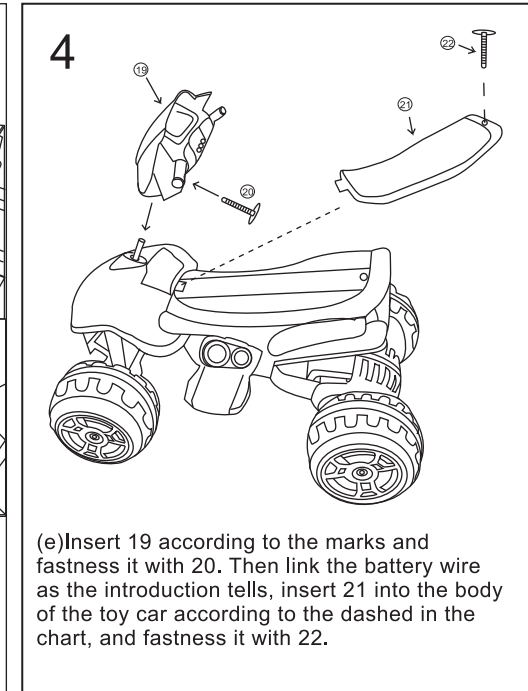
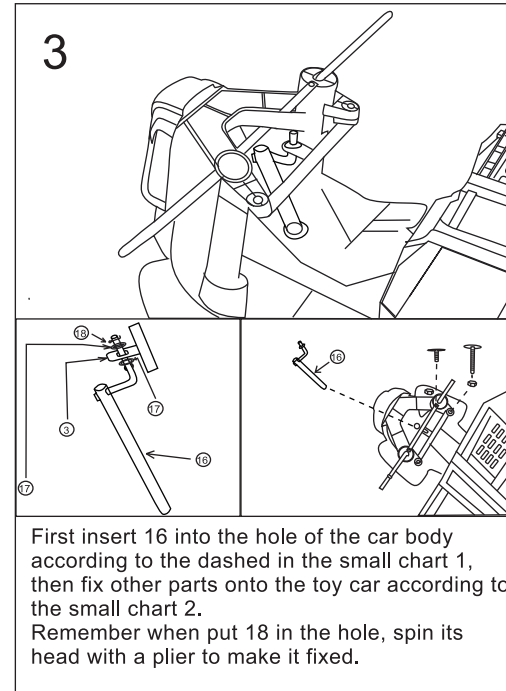
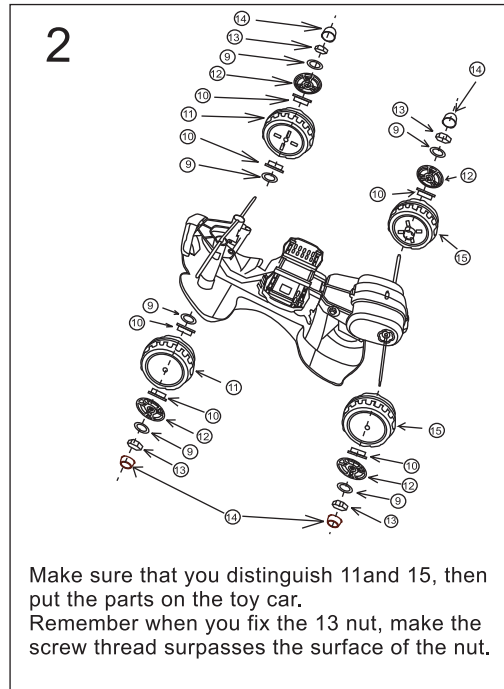
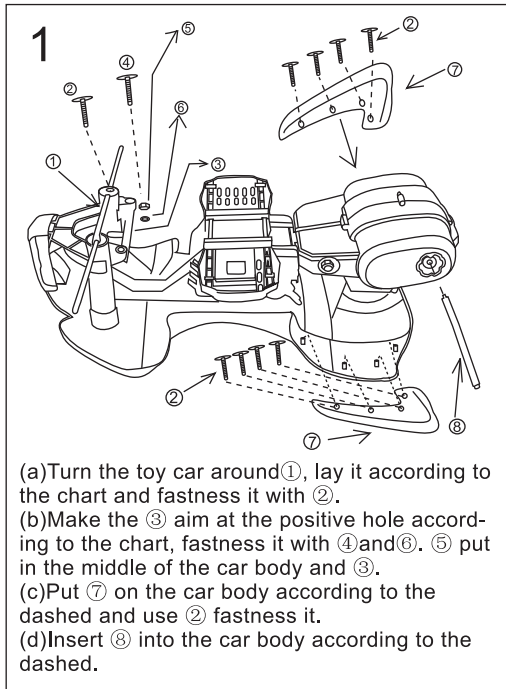
When the toy car can't move, please wait for about 10 minutes, then try again. Maybe the electric current is a little high and it causes the auto-renewing fuse not work in a short time.



Notice: The fused tube is rated at 20 amperes.

situations	tips
When it can't move	To check if the battery is linked with the main wire or other batteries.
When it moves slowly	To check if battery is energized for 8 to 12 hours
When the battery can't be energized	To check if the battery is broken

6.explosive chart



Our products are suitable for the following standard:

- GB6675
- ASTM-F963
- EN71 AND EN62115